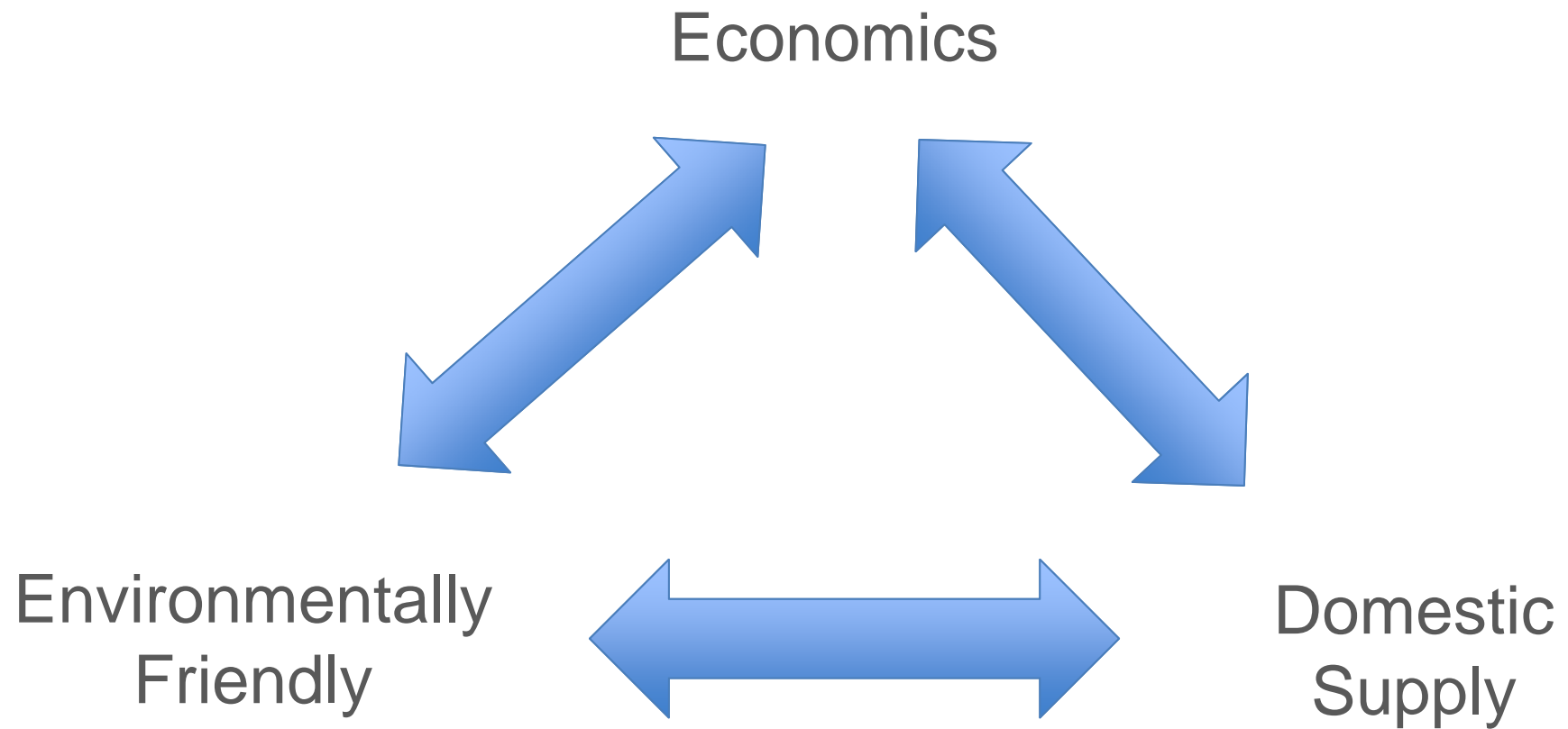


# ***EAGLE***

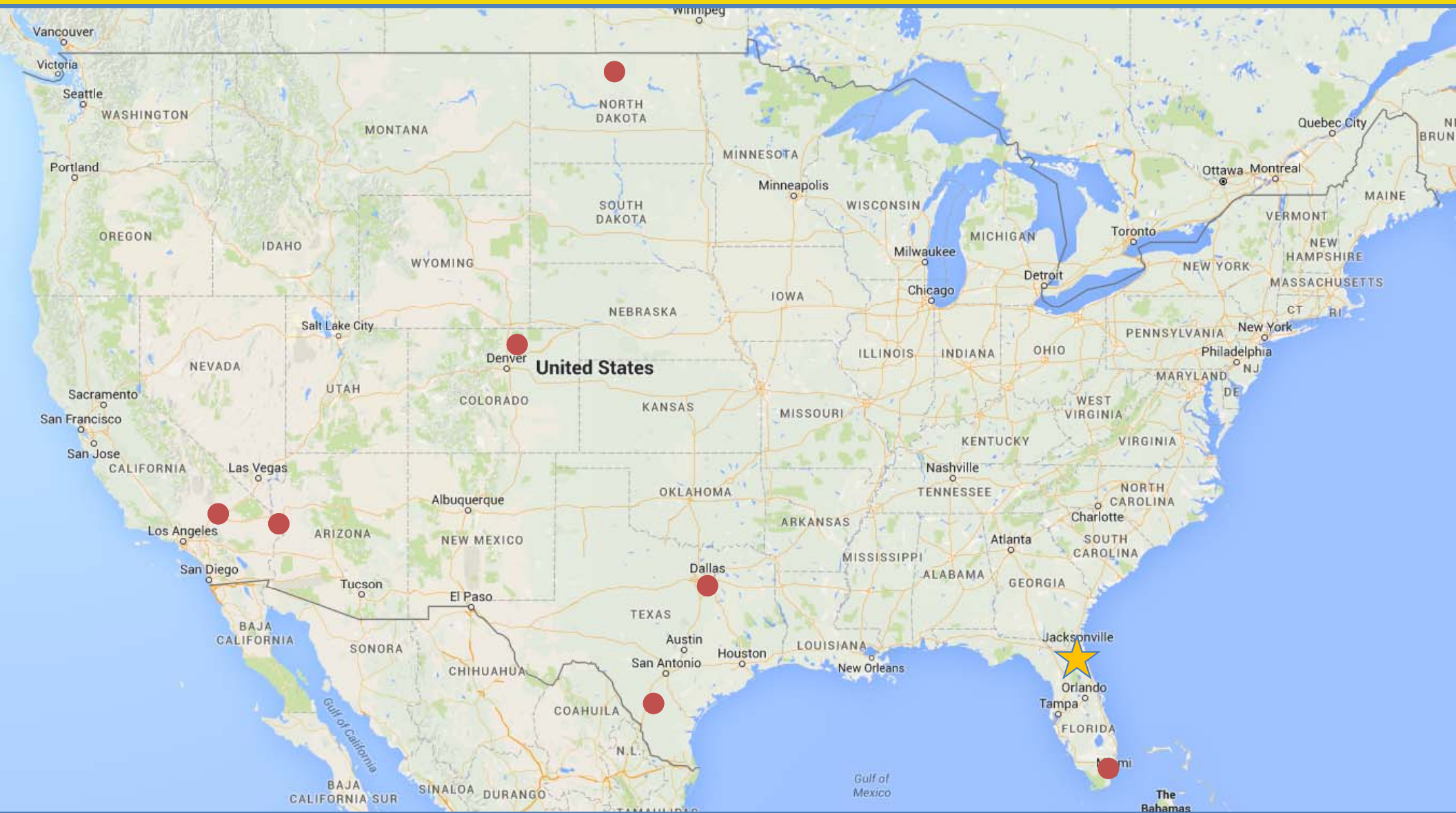
**LNG PARTNERS**



# The Case for LNG



# Merchant LNG Facilities



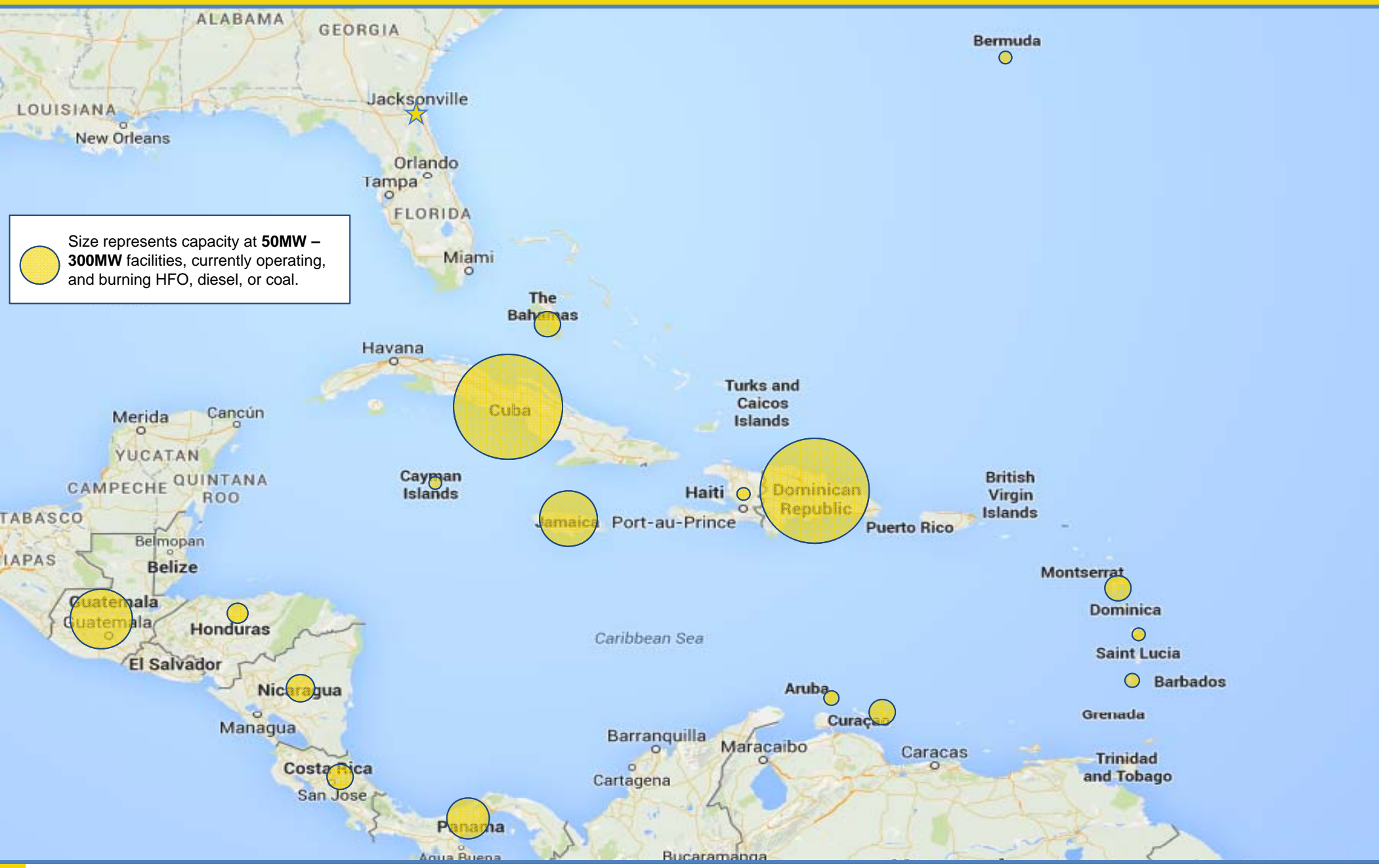
Small handful of dedicated merchant LNG facilities in the United States



# Why Jacksonville?



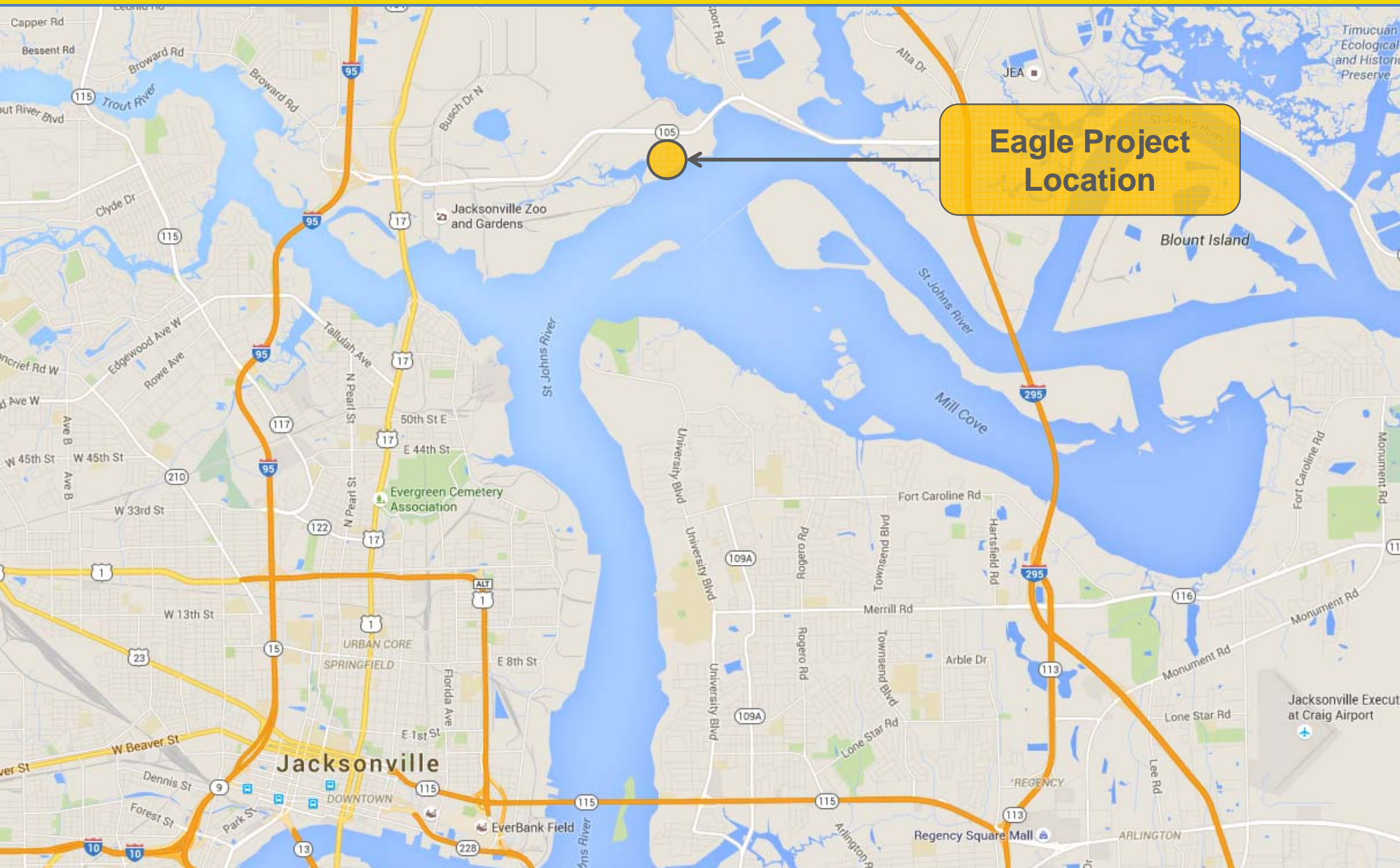
# Central America & Caribbean Market Opportunity



Eagle facility represents 5% of LNG demand from target power facilities



# Jacksonville Project Location



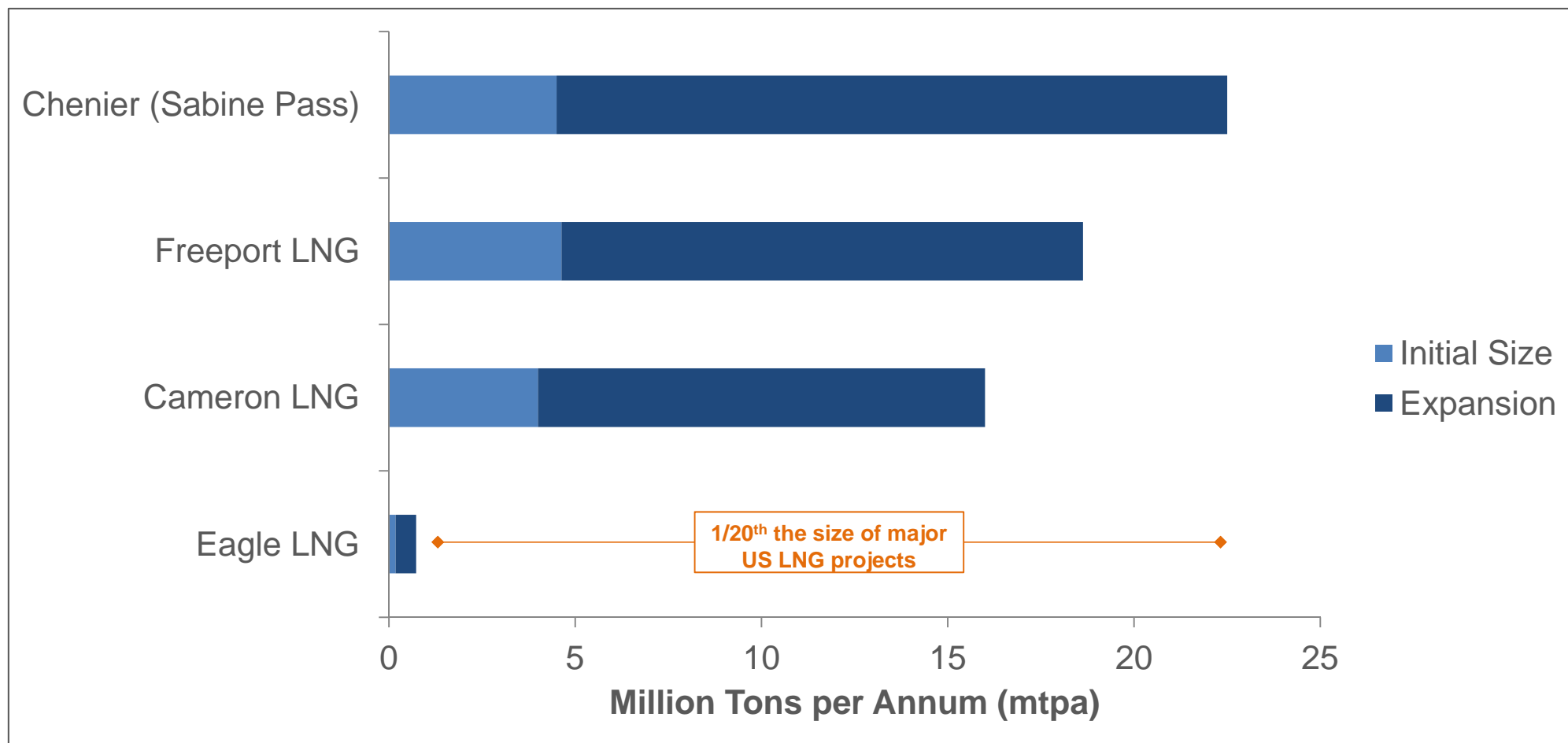
# Jacksonville Project Layout



- **Designed for small scale export and domestic markets**
  - Facility specifically designed to send-out smaller LNG transfer vessels (up to ~30' draft, 700 foot length)
  - Jacksonville is a southeast hub for marine, rail and trucking



# Scale of Jacksonville Project

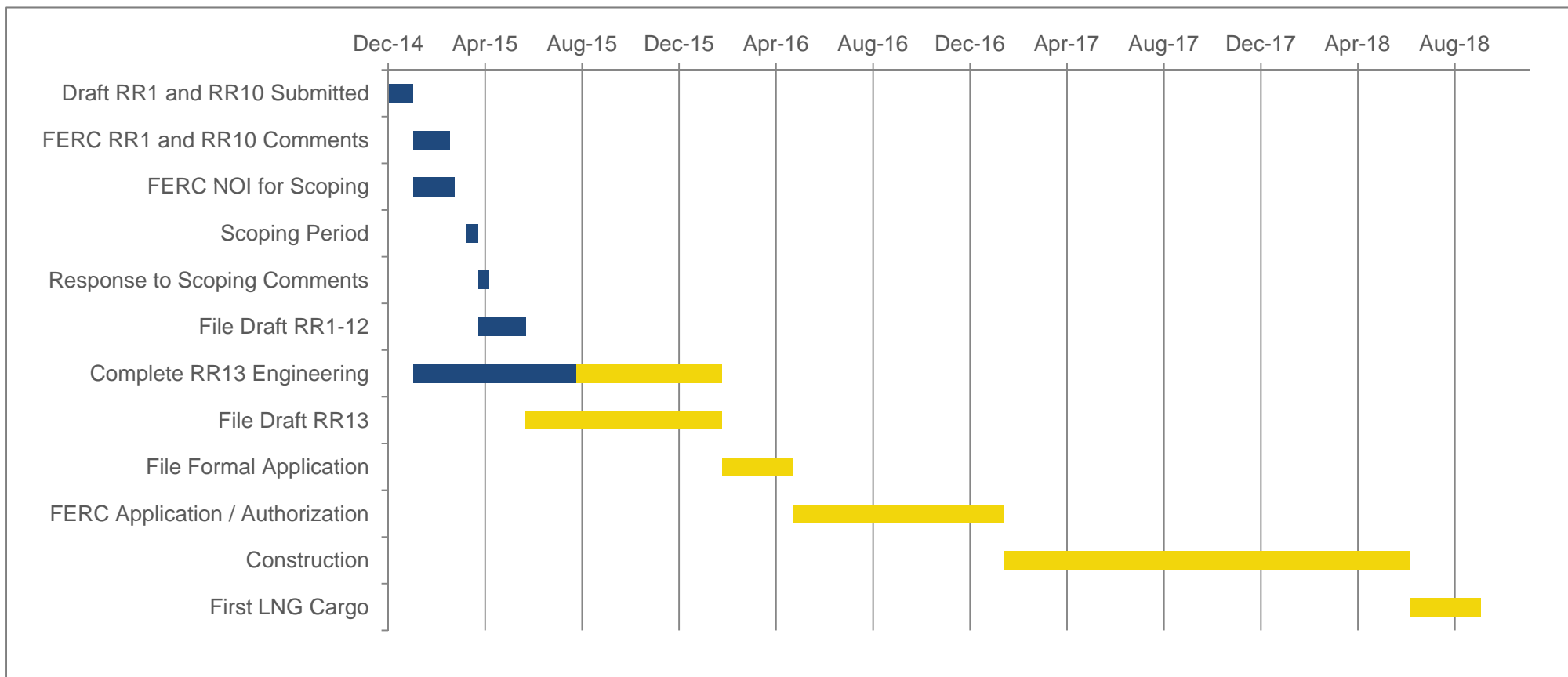


## Niche LNG solution:

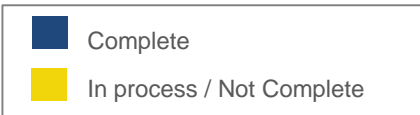
- Smaller Capacity
- Smaller Vessels → Shallow Drafts → Small Export Opportunities
- Trucking & ISOs → Utilities, IPPs, Transportation, Heavy Horse Power



# Project Timeline



- Eagle has been developing project since 2013
- Pre-filing approval issued by FERC on December 3
- Draft RR1-12 submitted to FERC on May 26, 2015
  - Anticipate formal application Q1 2016
- Draft FERC EIS and authorization by 3Q 2016
- Completion of the facility by 3Q 2018



# Thank You

**EAGLE**  
LNG PARTNERS

