



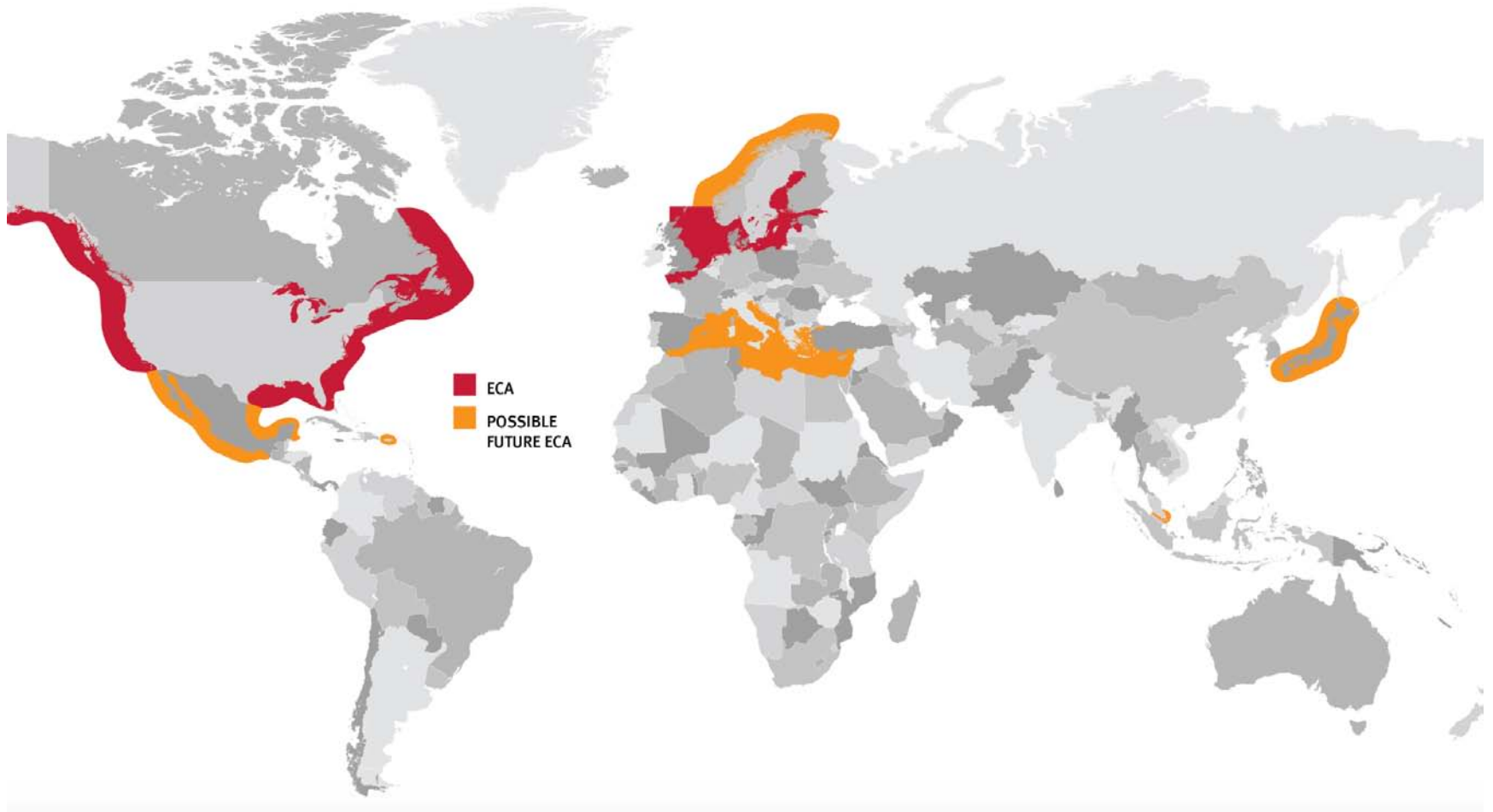
Jacksonville, FL

October 16, 2015



- Joint venture between WesPac Midstream and Pivotal LNG.
- WesPac Midstream
 - OakTree Capital \$100B publicly traded (NYSE:OAK) private equity
- Pivotal LNG
 - AGL/Southern Company \$50B utility, publicly traded (NYSE:SO)
- LNG plant operational Q4 2016
- First marine LNG plant serving the first LNG powered cargo ship

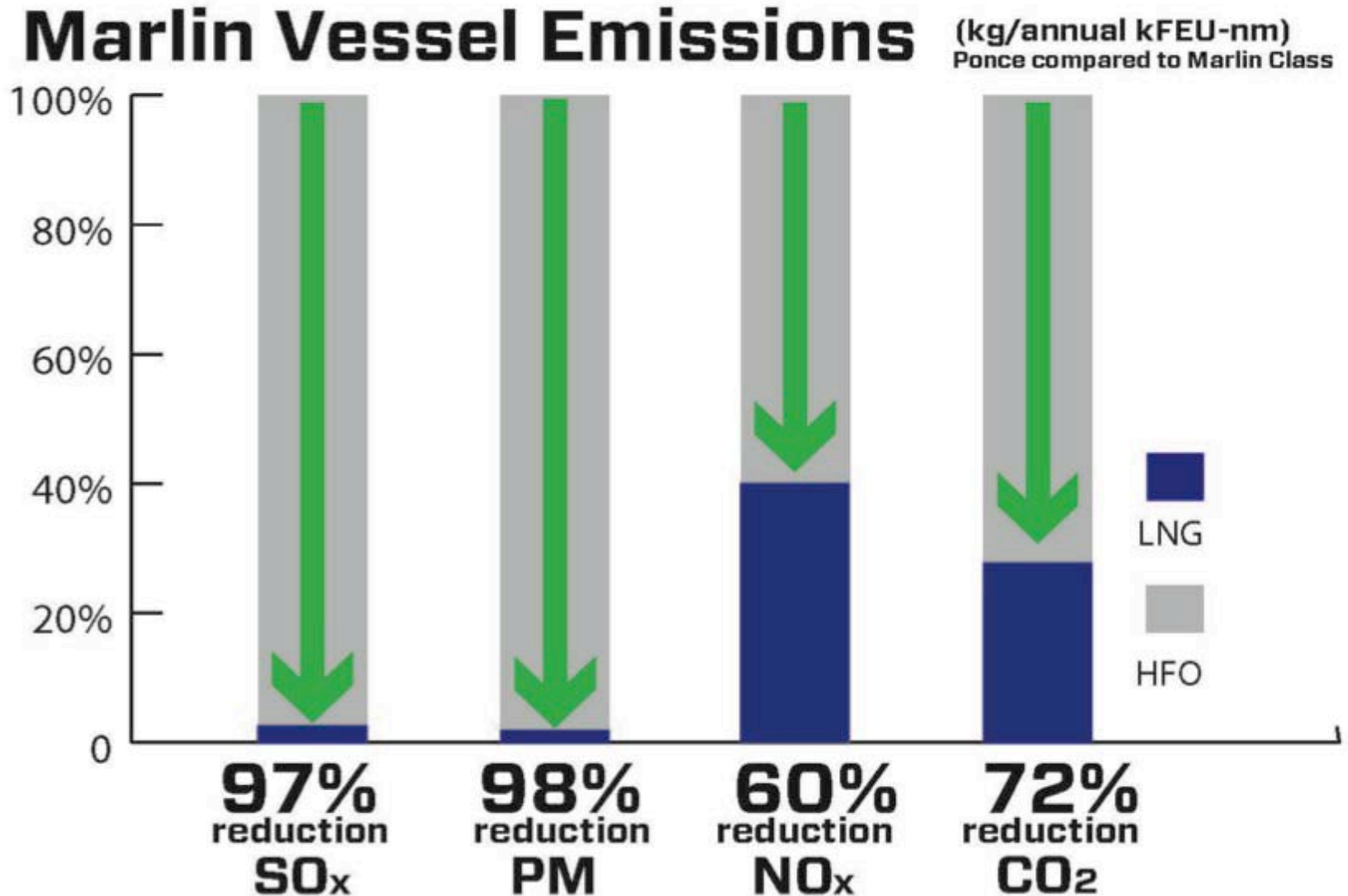
Emissions Control Areas (ECA)



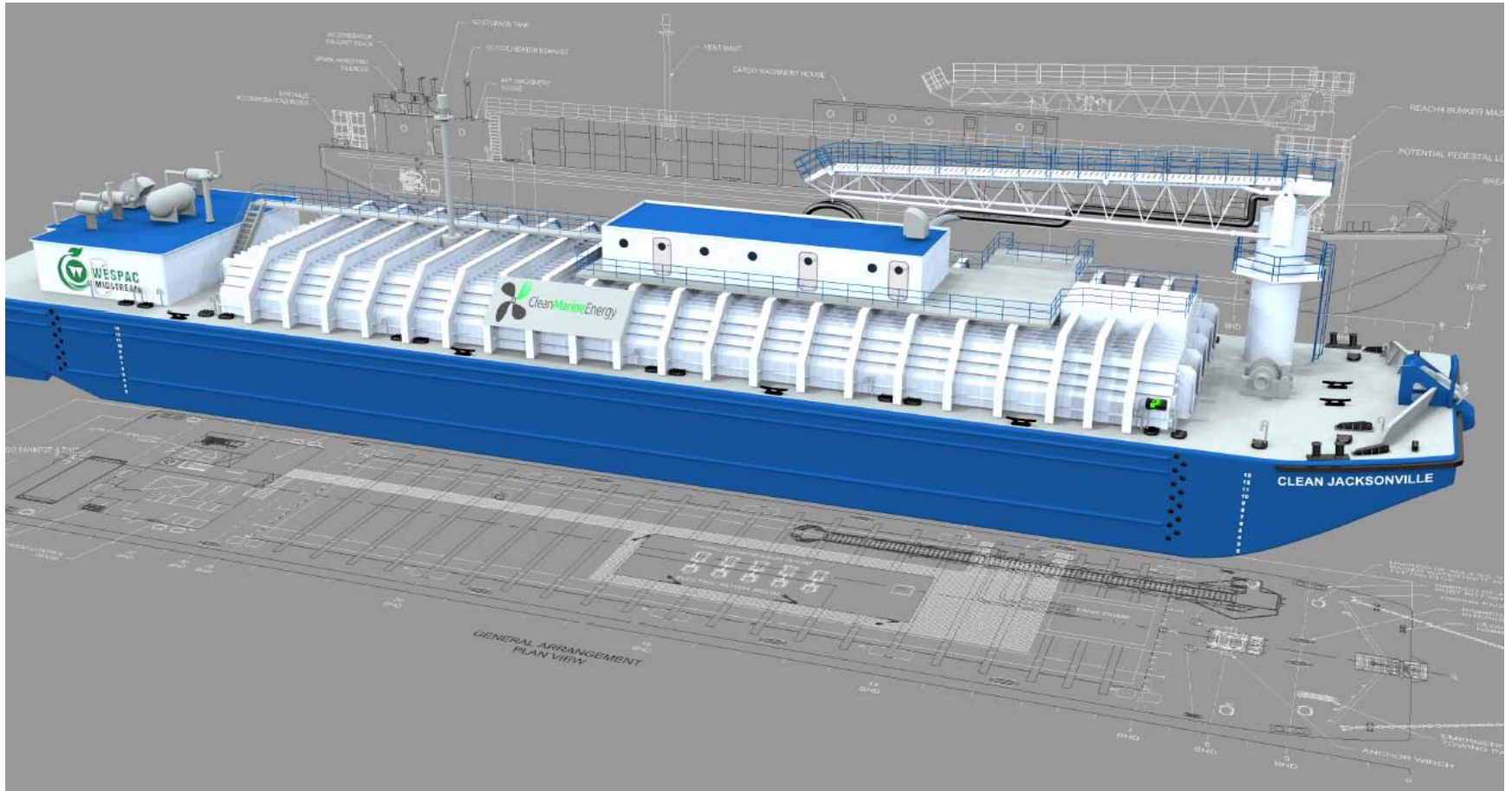
TOTE Maritime



Emissions Reductions



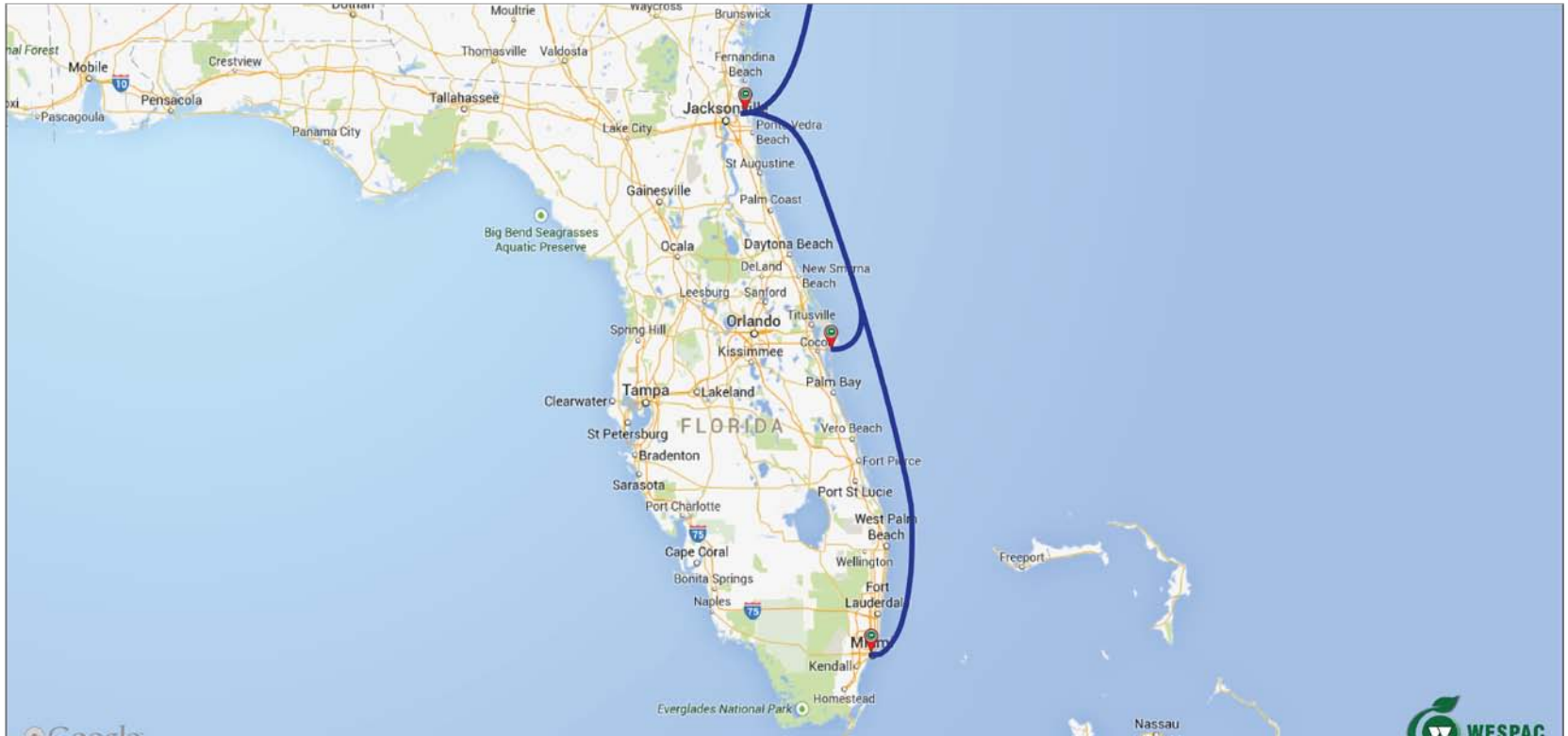
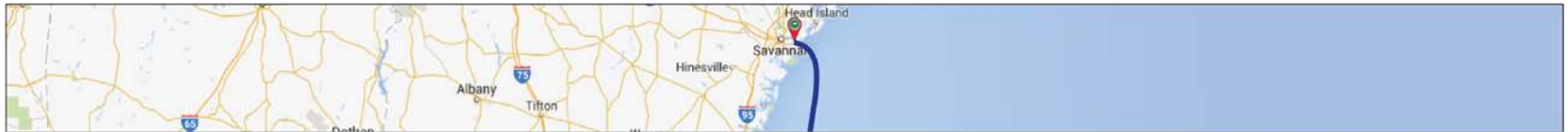
LNG Bunker Barge



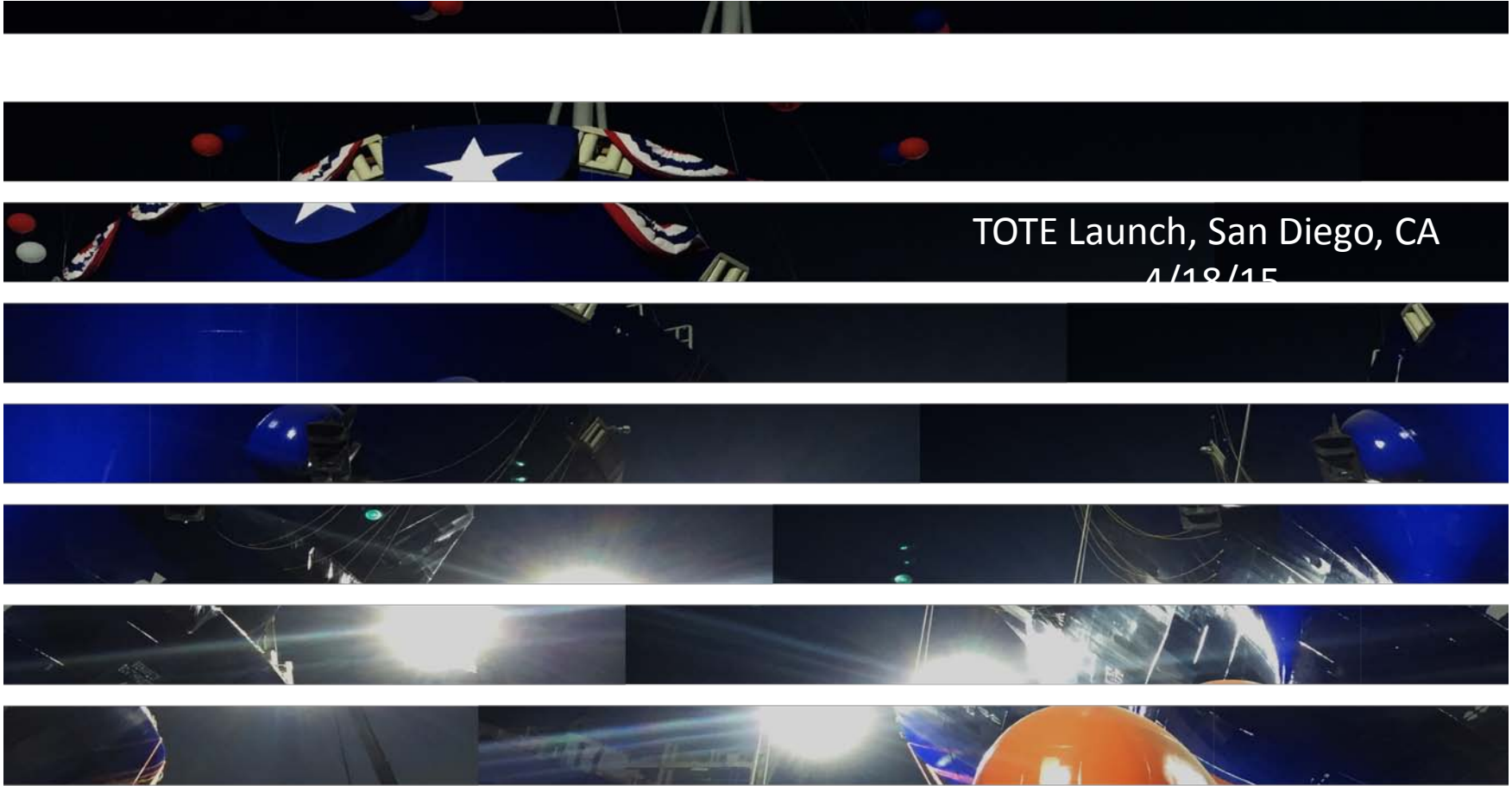
JAX LNG LNG Plant



Possible LNG Distribution



Thank you



Contact: Kevin Worley
VP Commercial Development
(904) 652-4152
kworley@wespac.com
www.wespac.com